

HOPE *worldwide* PNG Inc.
Annual General Meeting
Date: April 23rd 2022
Venue: Lawes Rd Clinic,
Konedobu,
Port Moresby

Country Director's Report FY2021

Outline of Presentation

- a. Overview of Programs
- b. Finance Presentation

By: Priscilla Sine Mal, CD
HOPEww PNG @April23rd2022

A. Overview of Programs FY2021

□ Health programs

- ▶ Integrated Primary Health Care funded by PNG Government through Christian Health Services
- ▶ HIV Program Funded by Global Fund
- ▶ TB Program Funded by Global Fund
- ▶ HIV Support: GBV and Active Case Management funded by USAID
- ▶ Clean Water Program funded by Digicel PNG Foundation

□ Health programs:

Integrated Primary Health Care funded by PNG Government through Christian Health Services

- ▶ HOPEww PNG manages 2x urban clinics (9-mile Clinic & Lawes Rd Clinic) in partnership with NCDPHA.
- ▶ Rural health facilities in Simbu Province (Bokolma & Kalewari, Gumine District and Moroma Sub-Health Centre, Kerowhagi District, extending support to Jiwaka Province.

□ Health programs:

Integrated Primary Health Care funded by PNG Government through Christian Health Services

► **Current Services:**

- Outpatients
- Maternal Child Health comprising of Family Planning Antenatal & Well Baby Clinic
- Nutrition Clinic
- STI/HIV/ART
- TB Clinic
- Leprosy Treatment and other Skin Diseases
- Gender Based Violence Treatment and Counselling –Referral Pathways
- Laboratory services for Malaria Testing, sputum Test
- Covid19 triaging and sample collections

❑ Health programs:

Integrated Primary Health Care funded by PNG Government through Christian Health Services

► Highlights for 9MC and LRDC

Although staff contracted C-19, all recovered!

new Gene-Xpert machine being installed by the Central Public Health Laboratory (CPHL) team at the 9-mile clinic laboratory and training for our MLT. The laboratory underwent maintenance and with installation of air-conditioning and other necessary equipment to ensure the lab meets CPHL standards. This exercise was sponsored by HOPE worldwide PNG . We have been sending sputum specimens to other clinics for the Gene-Xpert machine (diagnostic test for tuberculosis) but now we can do diagnostic test in our own Laboratory. **Pretty Exciting!!**



❑ Health programs:

Integrated Primary Health Care funded by PNG Government through Christian Health Services

► Highlights for 9MC and LRDC

HOPEww Australia PPEs donation to both clinics

Hygiene packs from Gold Coast Church of Christ for Mothers and Babies



HOPE
worldwide
PAPUA NEW GUINEA

□ Health programs:

Integrated Primary Health Care funded by PNG Government through Christian Health Services

► Highlights for 9MC and LRDC

JICA Office PNG Representative
Visited 9MC to assess training
Needs and further opportunity
in clinical training for HCWs.



□ Health programs: Volunteer Initiatives

► Highlights for 9MC and LRDC

volunteers and friends from Port Moresby Church Of Christ who came out to do cleaning and mini landscaping at the Lawes Rd Clinic.



❑ Health programs:

Integrated Primary Health Care funded by PNG Government through Christian Health Services

► Rural Health Champions



Bokolma Aidpost clinician in remote Gumine District in Simbu Province, came to the rescue of a severe anemic patient last weekend. The patient was managed and fully recovered the same day , and sent home with drug supplies

❑ Health programs: Hospital Donation

- ▶ HOPEww PNG donated 12 Boxes of Essentials PPE supplies to POMGEN. Donation made possible by HOPEww Global and Heart to Heart International.



❏ Health programs:

TB/HIV Program Funded by Global Fund (GF)

- ▶ HOPEww PNG was successful last year to be the grant recipient for another 3 years for GF (2021-2023)
- ▶ HOPE's biggest program is the TB/HIV Program under GF
- ▶ NCD-HIV Program- Rolled out last year- June 2021
- ▶ Central Province- TB - Same as above
- ▶ Simbu Province- TB/HIV- HIV Implementation 2022.
- ▶ Despite the late start of the program implementation (started second week of June) and c-19, HOPE performed extremely well and was able to overachieved the Donor targets.

□ Health programs:

TB/HIV Program Funded by Global Fund (GF)

► HIV Program - NCD

Strategic approach/catch – up plan employed due to late implementation

1. Prevention Component:

- ❖ Prevention Team conducts 4 Mobile VCT and 2 Night Interventions conducted per week (Mobile Clinics)
- ❖ Since HIV testing was conducted in the communities, individual target for reach and test for the 19 field workers increased to 6 per day ($19 \times 6 = 114$ clients reached and test per day)
- ❖ Effective monitoring to ensure daily target was achieved
- ❖ Weekly meeting to discuss weekly challenges and way forward.

2. Care and Treatment Component at specialist clinics at Lawes Rd and 9MC.

□ Health programs:

TB/HIV Program Funded by Global Fund (GF)

▶ TB Program – Central Province

- ❖ Signing of MoU between HOPE *worldwide* PNG and Central Provincial Health Authority on 9th December 2021 to bind the partnership for the implementation of Global Fund National TB Program for 3 years (2021-2023).
- ❖ Signing of Service Level Agreement (SLA) between HOPE *worldwide* PNG and City Pharmacy Limited for the partnership involving CPL to manage Central Province MDR TB Patients' Food Enabler Program. It is a vital program to maintain MDR TB Patients on monthly food supply to take their TB drugs on daily basis.
- ❖ 53 registered MDR TB Patients from Central Province were supplied with food ration under TB Patients Food Enabler Program including children.
- ❖ 38 TB Village Health Volunteers (VHVs) provided with basic TB Management Training by the Central Provincial Health Authority's Technical Team (Medical Training Team).

□ Health programs:

TB/HIV Program Funded by Global Fund (GF)

- ▶ Staff Capacity Building-Trainings for Health Workers/TB officers
- ❖ **Training of Childhood TB Management**
- ❖ **Training of Community Health Workers (CHWs) on TB Management**



□ Health programs:

TB/HIV Program Funded by Global Fund (GF)

▶ **TB/HIV – Simbu Province**

- ❖ Establishment of Provincial Office in Mingende
- ❖ 8 BMU Sites supported. 4 HOPE TB clinicians stationed at specialist clinics at Kerowhagi HC, Moroma Sub-Health Centre, Koge HC (SinaSina Yongomul and Kilau HC (Salt-Nomane-Karamui)

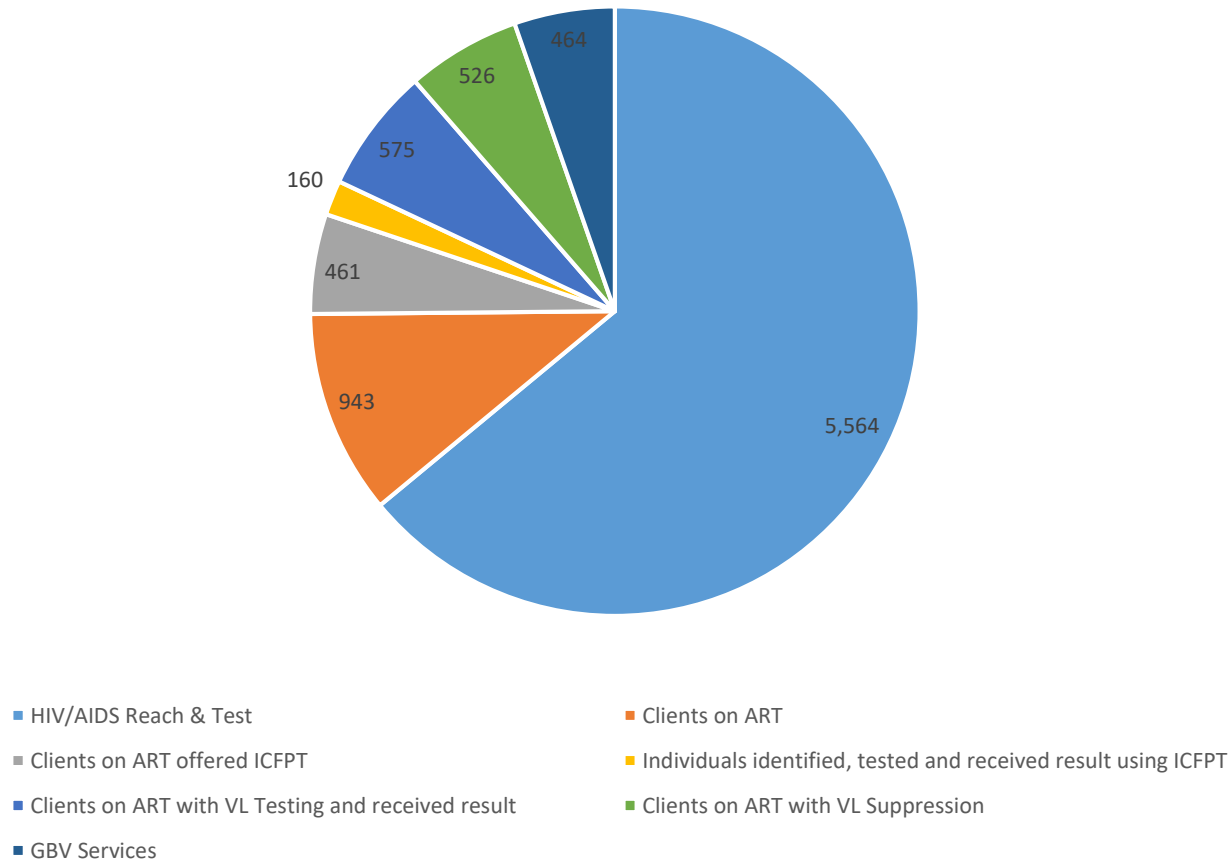
□ Health programs:

HIV Support: GBV and Active Case Management
funded by USAID

- ▶ Improvement seen in Lost to Follow-up Cases being reconnected to Care and Treatment
- ▶ Improvement in GBV cases being registered and offered clinical counselling and treatment, referral pathway is provided also.
- ▶ Kirap Bung Wantaim Session with clients indicates no shame and fear after physiological support and empowerment session is imparted. Clients talked freely with each other.

Data HIV/AIDS & GBV Integrated Services FY2021

HIV/AIDS & GBV Services



❑ Clean water Project funded by Digicel PNG Foundation

- ▶ A project made possible through partnership with HOPEww Global and Wine to Water.
- ▶ Training/Distribution of high quality sawyer filters that removes 99.99% bacteria from contaminated water /wells for clean and safe drinking water for families.
- ▶ Piloted in Sepik river villages of Kambuku and Jangit village in Angoram due to high Water-Borne Disease. Data supplied by East Sepik PHA.
- ▶ HOPE successfully delivered the project
- ▶ Digicel Foundation will continue support to complete households in 2x villages in 2022
- ▶ East Sepik Provincial Government has come on board to partner with HOPEww PNG to extend the reach in 2022.

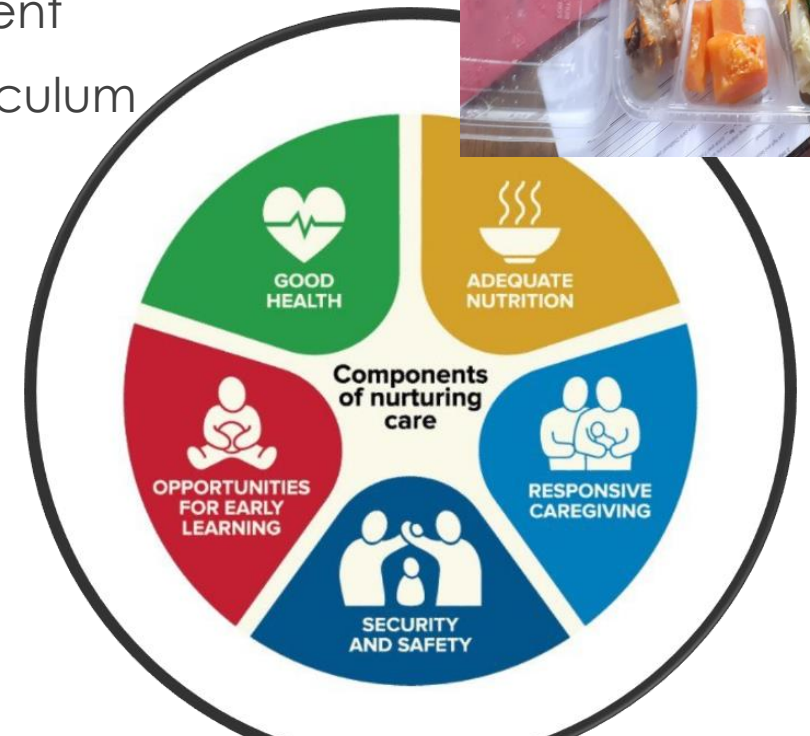
□ Education Program

- ▶ Early Childhood Program
- ▶ Library Books Donation

Funded under HOPEww Australia

Education Program: Early Childhood Program funded by HOPEww Australia

- ▶ In Education Program, we are focusing on schools that are in marginalized communities. Schools that are not well recognized but their interest and heart is in the learning and wellbeing of the children.
- ▶ Teacher Support to Mercy Care School @ Erima Settlement
- ▶ Provision of Technical Assistance in early childhood curriculum development
- ▶ Implementation of nurturing care framework.



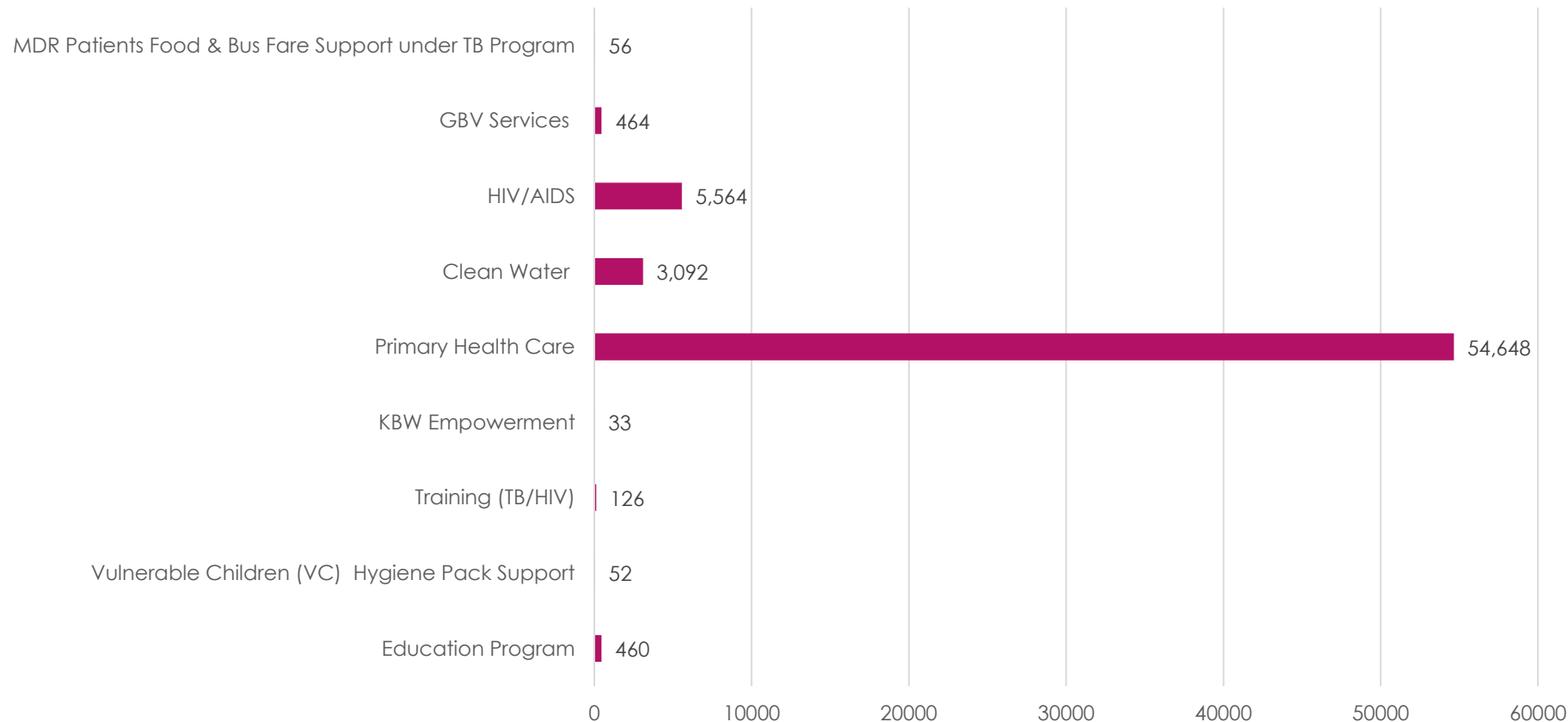
❑ Education Program: Library Books Donation

- ▶ Distribution of reading books to early childhood schools in remote Papua New Guinea. So far over 4000 books and teaching materials were distributed to each of these following marginalized schools in 2021: Mercy Care Early Childhood, Kalewere Primary School and Yomba Day Care Centre
- ▶ These Schools have no library and with HOPE's support, they now have library classes/sessions as part of their curriculum. Having library sessions have contributed to kids being happy and excited to be in school because they can read, see picture books and learn new exciting words.



□ Data Presentation

Total Beneficiaries FY 2021 : 64,495 People!





Thank you!